

---

# Circlewood Village

---



# VISION

Set within a dynamic 40-acre forest on beautiful Camano Island, Circlewood Village will be a center for transformation and innovation where people come to be changed through:

- **Connection** – experiencing life in intentional relationship with one another and the whole community of creation.
- **Co-learning** – exploring ecological worldviews, practices, and spiritualities that challenge the status quo and call us to new understanding.
- **Collaboration** – working with others to accelerate cultural change that restores and nurtures health and wholeness for people, communities, and ecosystems.

# MISSION

To accelerate the greening of humanity.





# THE NEED

We are in a period of rapid ecological change affecting every place and people group on Earth. Major issues such as climate change, biodiversity loss, air and water pollution, and soil erosion are disrupting essential ecosystems, negatively affecting vulnerable populations, and pointing towards a very difficult future.

While emerging political, corporate, and technological solutions are promising, we cannot depend on the same frameworks and tools that helped create this crisis to get us out of it.

Changing course will require a major transformation of humanity's worldview and way of life – a cultural, moral, and spiritual task that is often called “The Great Work” of this new millennium. To guide and accelerate this Great Work, we need places that demonstrate what it means to live in harmony with the earth, places that enable destructive patterns and ways of thinking to unravel and reform, places that help us rediscover ancient wisdom and practices, places that unlock and unleash humanity's creative capacities for change. We need places that call people into the Great Work and help it move a little faster, places that “accelerate the greening of humanity.”

Circlewood's innovative design team, immersive educational strategy, and talented leadership is creating such a place.

# THE VILLAGE

Circlewood Village will be set within 10-acres of Circlewood's 40-acre forest. The village center is a circle of buildings and gathering spaces for hospitality, shared meals, and learning. A short walk brings you to additional classrooms, greenhouses, gardens, and support buildings. A little farther and you come to one of three "mini-villages" comprised of specially designed housing units. Continue on and you find yourself immersed in a mixed-age, diverse Pacific Northwest forest, home to owls, eagles, coyotes, deer, and the Circlewood Village community.

## VILLAGE CENTER

- Welcome Center/Staff Offices
- "The Commons" – Dining Hall + Teaching Kitchen
- Classroom Building
- Great Hall
- Outdoor Spaces: Amphitheater + "The Nest"

## OUTER RING

- Classroom/Workshop
- Mechanical Building
- Greenhouse, Gardens, and Barn

**HOUSING** – each mini-village consists of housing for 10-15 people.

- Big Leaf Maple Village
- Meadow Village
- Forest Ridge Village



# PROGRAMS

Programs in the village will focus on four areas:

- Practical Earthkeeping – learning to care for the earth.
- Ecological Leadership – learning to guide others.
- Sustainable Development – helping humans and Earth.
- Spiritual Renewal – cultivating creation spirituality.

These programs will be offered through:

- *Vocational Internships* – Designed for young adults seeking green vocations and careers, participants will live, work, and learn at the Village for 3-6 months.
- *Learning Cohorts* – Focusing predominantly on adult learners, these cohorts will combine week-long stays at the village with online coursework and connection.
- *Accredited Courses* – Partnering with colleges, universities, and seminaries to offer unique courses.
- *Multi-Day Workshops* – These accessible, 2-3 day workshops will focus on various topics of practical earthkeeping.
- *Guided Retreats* – These will offer participants a chance to focus on rest, personal healing, and life discernment.
- *Hosted Courses and Events* – As a unique venue, we will offer a limited number of hosted courses and events to missionally-aligned organizations and communities.



# PROGRESS

## COMPLETED

- Transfer of 40 acres into Circlewood ownership.
- Establish 30-year Forest Conservation Plan.
- Define clear and compelling vision.
- Form design and development team.

## NEXT UP

- Finish existing building as first classroom.
- Design and build prototype housing unit.
- Install preliminary infrastructure.
- Begin onsite programming.

## FUTURE WORK

- Welcome Center
- "Commons" Dining Hall
- Mechanical Building
- The "Nest" Gathering Area
- Outdoor Amphitheater
- Greenhouse and Gardens
- Meadow Village
- Big Maple Village
- Forest Village
- Classroom Building
- Great Hall
- Barn

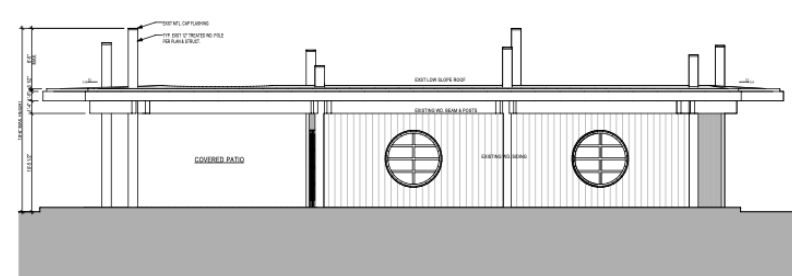


# Current Work Detail

We have been focused on establishing a clear and compelling vision, bringing together a creative design and development team, gathering seed funding, and completing the first building project. Completing this phase will allow us to begin substantive onsite programming and help future participants and funders catch the vision of the village.

The particular elements include:

- Transfer of the 40 acres to Circlewood  
DONE – with great thanks to Tom and Christine Sine.
- Establish 30-year Forest Conservation Plan  
DONE – with help from Northwest Nat. Resource Group
- Clarify vision and gather design and development team  
DONE – an exciting vision with a world-class team.
- Begin onsite programming  
DONE – started day retreats, work groups, etc.
- Finish existing building as first classroom I  
IN PROGRESS – design is complete. Permit application in.
- Build prototype housing unit  
IN PROGRESS – initial design underway.
- Install preliminary infrastructure  
IN PROGRESS – access road in. Well is dug.
- Raise \$925,000  
IN PROGRESS – \$425,000 raised. \$239,000 grant won.



# IMPACT

The long term impact of Circlewood Village will come through transformed students, guests, and long-term residents who experience the village, go through an immersive educational experience, and are sent out to do their part in the “Great Work” and bring transformation to their communities.

Over the course of the next few decades, we imagine 1,000 Circlewood alumni accelerating change in 1,000 places.

As the center for Circlewood’s media endeavors, we also anticipate expanding our connection and service to the growing global community of creative earthkeepers.

In these ways, Circlewood Village can be a center of global transformation that truly “accelerates the greening of humanity.”





## Work Song Part II: A Vision by Wendell Berry



If we will have the wisdom to survive,  
to stand like slow-growing trees  
on a ruined place, renewing, enriching it,  
if we make our seasons welcome here,  
asking not too much of earth or heaven,  
then a long time after we are dead  
the lives our lives prepare will live  
here, their houses strongly placed  
upon the valley sides, fields and gardens  
rich in the windows. The river will run  
clear, as we will never know it,  
and over it, birdsong like a canopy.  
On the levels of the hills will be  
green meadows, stock bells in noon shade.  
On the steeps where greed and ignorance cut down  
the old forest, an old forest will stand,  
its rich leaf-fall drifting its roots.  
The veins of forgotten springs will have opened.  
Families will be singing in their fields.  
In the voices they will hear a music  
risen out of the ground. They will take  
nothing from the ground they will not return,  
whatever the grief at parting. Memory,  
native to this valley, will spread over it  
like a grove, and memory will grow  
into a legend, legend into song, song  
into sacrament. The abundance of this place,  
the songs of its people and its birds,  
will be health and wisdom and indwelling  
light. This is no paradisaal dream.  
Its hardship is its possibilities.